



CLOSER

Close to Resources Recovery



On behalf of the CLOSER project, we are pleased to welcome you to the first issue of our newsletter.

Here you will find information about the project activities, as well as news and events related to construction and demolition waste (RCD).

You received this first newsletter because we believe that the topic is of interest to you.

To receive future numbers
(one every 2 months) sign up
[here](#).

Highlights:

- *CLOSER Project*
- *Secondary raw materials*

CLOSER Project

Aware of the current challenges in the management of construction and demolition waste, the Laboratório Nacional de Engenharia Civil (LNEC), the Agência Portuguesa do Ambiente (APA), and the Instituto dos Mercados Públicos, do Imobiliário e da Construção (IMPIC) are developing the Project **CLOSER - Close to Resources Recovery**, funded by the EEA Grants Environment Program.

This project aims to develop a **national guide for carrying out preliminary audits on the demolition and rehabilitation of buildings** and the presentation of solutions for the recovery of existing materials.

The **CLOSER Project** focuses on the end-of-life phase of materials used in buildings and on their future reintroduction into the economy, contributing to be closer to the ideal recovery of materials.

It should be noted that the **CLOSER Project** contributes to

the application of the established principles of the **New Circular Economy Action Plan**, playing an important role in the transition to more efficient buildings in terms of resource utilization and in the trajectory towards a built environment free of toxic substances, as foreseen in the **European Green Deal**.

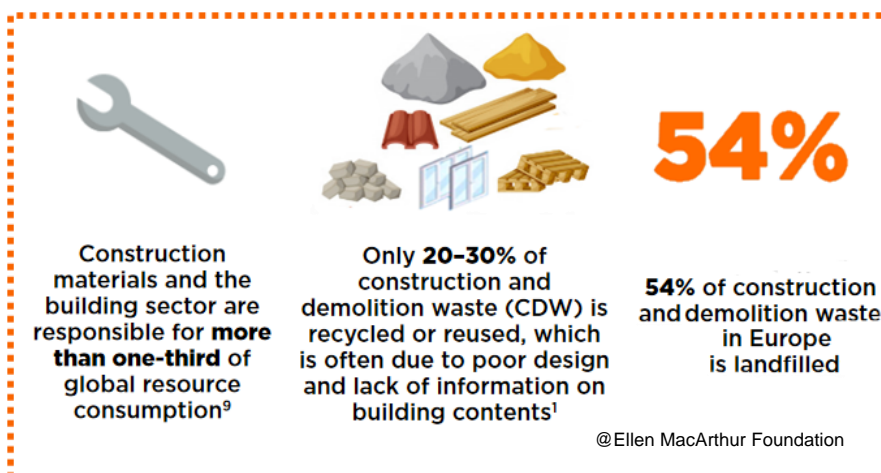
At the end of March, a survey was launched among different stakeholders. The aim of the survey is to find out the opinion on the integration of pre-demolition and / or building rehabilitation audits as a tool that, combined with deconstruction, enhances the valorisation of materials.

Follow us:

<http://www.closer.lnec.pt>



Facts



“Pre-demolition audits contribute to ensure the quality of materials and the necessary segregation for higher value applications.”

Secondary raw materials

Construction and demolition waste, CDW, is a priority waste stream in the EU due to the high quantities produced and its potential for transformation into high quality secondary resources.

In Portugal, despite the recovery target being above 70% (2008/98/ EC), the backfilling operation represented, in 2018, more than 65% of the recovery operations while recycling stood at around 30 % (EUROSTAT; 2018).

The demolition pre-audits, contributing to ensure higher quality of the recovered materials and the segregation of dangerous substances, allows the use of materials from CDW as secondary raw materials in higher value applications.